

# PRIMARY

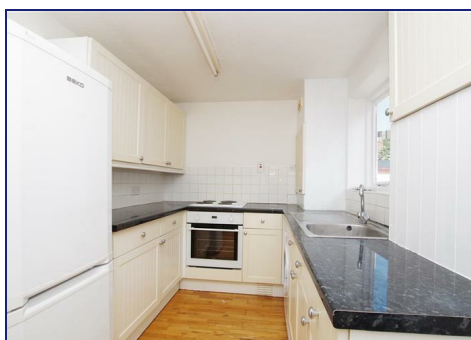
Tel: 01793 641 641

# HOMES & LETTINGS



**Exeter Street, Railway Village, Swindon SN1 5EF**  
**PCM £875 PCM**

\*\*\* AVAILABLE NOW \*\*\* We are pleased to offer this spacious one bedroom mid terrace house offered unfurnished. Located in the Railway village within walking distance to the town centre and railway station. The accommodation comprises of lounge/diner, kitchen, bedroom and bathroom. Property also benefits from a courtyard rear garden (with shed) and gas central heating. An early viewing is highly recommended.



**Tenant Information**

Length of Tenancy: Long term let with initial tenancy agreement of 6 months

Council: Swindon Borough Council

Tax Band: A

**Viewings**

Strictly via our Swindon office telephone (01793) 641641.

